



Add Health

The National Longitudinal Study of Adolescent to Adult Health

Users Conference Welcome and Opening Remarks

Amelia Karraker, Add Health Program Official, NIA Division of Behavioral and Social Research

June 17, 2024

NIA and Division of Behavioral and Social Research (BSR)

Social, psychological, economic, and behavioral research on the processes of aging at the individual and population level.

- Cross-cutting themes:
- Understanding and Addressing Health Disparities
- Life Course Perspective on Aging Processes
- Biobehavioral and Biosocial Integration



Add Health Principles and Features



Nationally Representative

School based sample, 2-mode interview design

Black, Chinese, Hispanic, disabled baseline oversamples; large SGM sample



Longitudinal

6 Waves adolescence to mid-40s (n~12,300)

High response rates



Multidisciplinary

Trans-NIH initiative

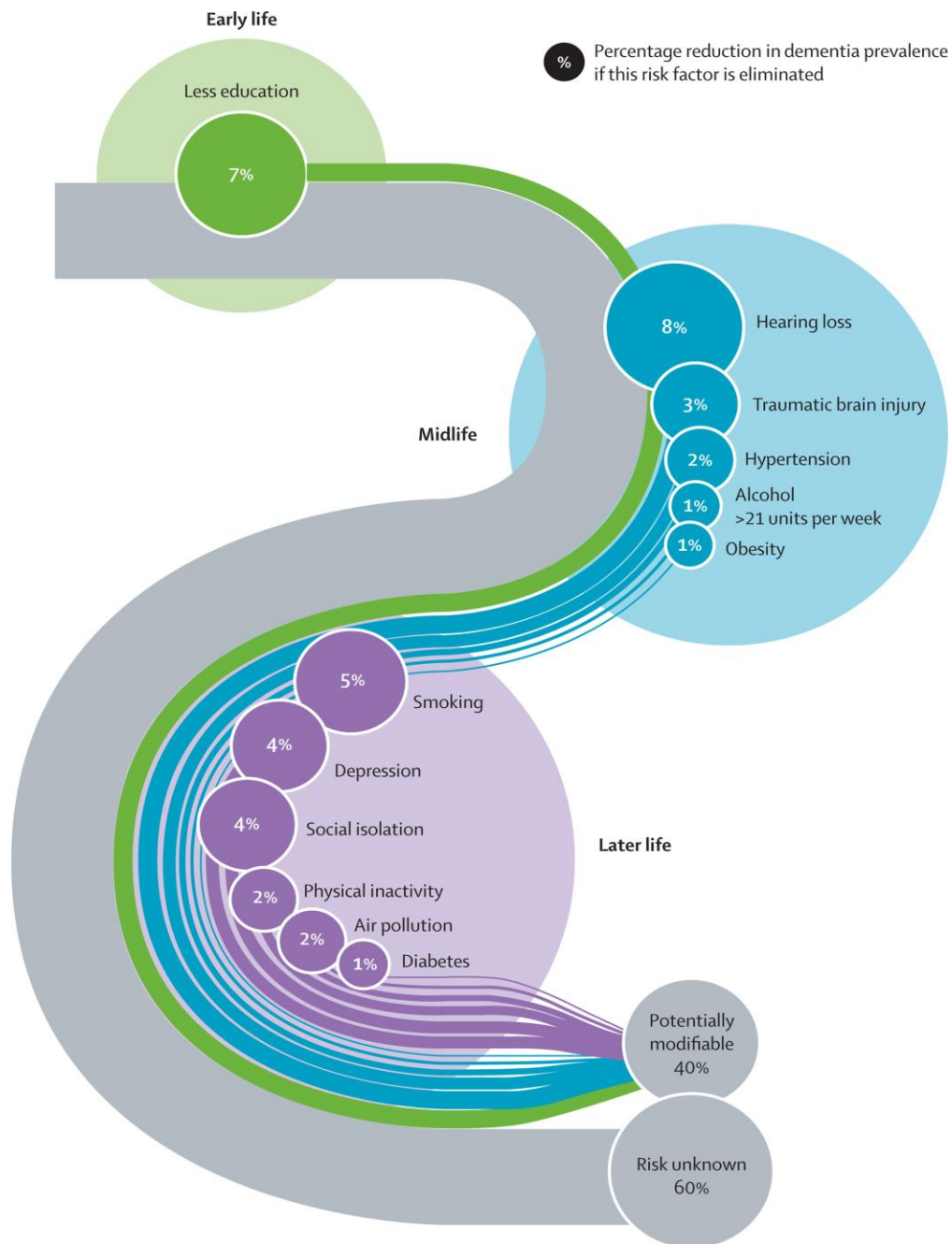
Repeated social, economic, biological, cognitive, exposomic measures



Public Data Resource

50,000+ unique users

175 peer-reviewed publications each year since 2008



AD/ADRD Epidemiology: What We Know...

- AD unfolds across the life course, beginning in early life
- Sizable share of AD prevalence modifiable
- These modifiable factors drive disparities

...and what we don't

- What findings generalize, what findings are unique to clinical or convenience samples or subject to other biases
- How early and midlife factors shape later life risks (opportunities for intervention)
- What additional modifiable factors may be—if you can't measure it, you can't evaluate its impact

Add Health Addresses Key NIA Priorities

AD/ADRD Milestones

- 1.C Diverse Cohorts
- 1.F Inclusion of non-AD cohorts
- 1.P Exposome Studies and Disparities

BSR NACA Review

Data infrastructure that supports research across the array of recommendations—particularly health disparities.

NIA Strategic Directions

- Goal B: Macrosocial Factors
- Goal D: AD/ADRD
- Goal F: Health Disparities
- Goal G: Infrastructure

NIA Announcements

- [RFA-AG-25-003](#): Research Collaboration Network in Structural Racism Measurement and Modeling (U24 Clinical Trial Optional)
 - Applications due October 17, 2024
 - Contact Dr. Frank Bandiera for more information

